



# The Coach Approach

The Newsletter of the Wisconsin High School Golf Coaches Association

Volume VI Issue 2

January 1993

## DEB HAUSER TO JOIN WIAA STAFF

Steven's Point. [Oct 23, 1992]-- The Board of Control at their October 11 meeting in Stevens Point approved the hiring of Debra J. Hauser of Darlington as a new assistant to the Director beginning January 18, 1993. Executive Director Douglas Chickering made the recommendation to the Board to hire Hauser after interviews were conducted with five finalists for the position from an initial list of 36 applicants.

Ms. Hauser will assume sports administration duties in swimming & diving, soccer, tennis and golf and also be responsible for the officials program including training, recruitment, evaluation and retention. She has been the district athletic director at Darlington since 1984 and has been with the school district since 1978 in both coaching and teaching.

A 1975 graduate of Clinton High School, Hauser earned a BS Degree in Business Education from UW-Whitewater in 1978 and a Masters in Secondary Education from UW-Platteville in 1991. In addition to being athletic director at Darlington, she has also taught business education and was head girls basketball coach from 1978-1982. Ms. Hauser was named the 1988 Area 5 "Athletic Director of the Year" by the Wisconsin Athletic Directors association.

## MEMBERS INTERESTED IN JOINING OUR BOARD OF DIRECTORS!

At our June clinic at Lake Arrowhead, a questionnaire was given to all members present. One of the questions posed to the members present was whether anyone was interested in joining our Board of Directors.

In the past, not much interest has been shown by our membership. After looking through the questionnaires returned, I was delighted to see many coaches expressing an interest.

Those coaches indicating an interest were

1. Adam Ulrich, Union Grove H.S.
2. Dean Christianson, Menomonee Falls H.S.
3. Tom Neal, Brookfield East H.S.
4. Bob Schweder, Princeton H.S.
5. John Lonergan, Hartford Union H.S.
6. Dick Malstrom, Medford H.S.
7. Gayle Wilfong, Fond du Lac, Goodrich H.S.
8. Steve Larsen, Lancaster H.S.
9. Paul Naumann, Brookfield Central H.S.
10. Del Prust, Appleton East H.S.

Last spring I also received a letter from George Faherty, Oconomowoc H.S. indicating he was interested in serving on our Board of Directors.

Those of you that did not

attend the June meeting and would like to be considered for a position on our Board of Directors, please drop me a line. My mailing address is:

Mary Beth Nienhaus  
Appleton H.S. West  
610 N. Badger Ave.  
Appleton, WI 54915

To all of the above, I thank you for your interest you have shown to our organization. We have your name on file and will be contacting you when a vacancy occurs within your district.

Sincerely,

Mary Beth Nienhaus

*Happy  
Holidays*

### On the Inside:

Summer Tournament p 6

Spring Clinic p 9 - 11

Results p 7-8

WIAA Survey Results p 6

WIAA HIGH SCHOOL GOLF COACHES ADVISORY

COMMITTEE REPORT

OCTOBER 28, 1992

The following are recommendations made by the Advisory Committee but have not been acted on by the WIAA Board of Control.

- 1. WIAA would like a composite list of all golf courses in Wisconsin that are quality courses for hosting post season play. Also, a list of courses that you would NOT recommend.
2. A motion was made to keep the present rule concerning coaching on the course. The WIAA surveys showed that the majority of coaches favored the present rule.
3. A motion was made that illegal coaching on the course by coaches or spectators, (violation of the coaching rule), would result in a two stroke penalty on the player for the first offense and a disqualification on the player for the second offense.
4. Scrimmage in golf was discussed with no action taken as it was deemed to be unnecessary in golf.
5. A question/answer article in the WIAA bulletin is needed to clarify some golf interpretations and misunderstandings concerning practice sessions involving other players, parents, etc. outside of your team.
6. A motion was made to look into Lake Arrowhead for the hosting of the boys tournament with two separate

banquets and employing the double crossover system for each day's play.

- 7. A motion was made to move the girls state meet two weeks earlier, (October 2,3), first allowable match August 9, eliminate regional for girls and extend season one week beyond state tourney if needed.
8. Recommended to host sectional on Monday, Tuesday during the week of the state tournament. Recommended that sectional sites use both tee offs to facilitate the number of teams.
9. A motion was made to award duplicate medals for places 2-6.
10. The current cart rule was discussed and no changes were made.
11. National Federation Survey was given out with the recommendation to give these surveys to members of the WHSGCA.
12. WIAA has golf videos available: Rules of Golf and Golf My Way. Videos are available for \$5.00.
13. WIAA asked us to write articles for the bulletin.
14. Discussion for adding five top qualifiers plus teams to advance in tournament play. No action was taken.

WHSGCA Hall of Fame Nominations Open

The Wisconsin High School Coaches Association is presenting plaques to all high school golf coaches that have coached for 25 or more years. If you have coached for 25 or more years please fill out the following form and mail it to:

T.J.Dieck
Milton High School
114 W. High Street
Milton, WI 53563

The 13 people that have been inducted into the Golf Coaches Hall of Fame are:

- John Ashenfelter Janesville Craig
Clark J. Byam Madison West
Ted Callis Madison East
Ken Check Eagle River
Nate DeLong Hayward
Leo K. Kerschitz Union Grove
Harry Max Milwaukee Pulaski
Hal Metzen Lake Mills, Wisconsin High
Gil Rodencal Oconto Falls, Sauk Prairie
Gregg Shimanski Madison Edgewood
Hugh Steward Racine Horlick
John Thomas Rice Lake
Richard Woerfel Cudahy

If you know anyone that you feel deserves to be in the Hall of Fame, the nomination forms were in the first newsletter.

The plaques are temporarily on display at the joint office of the Wisconsin State Golf Association and the Golf Foundation of Wisconsin. The address is 333 Bishops Way 102, Brookfield, WI. The office is open Monday to Friday from 8 to 5.

Form with fields for Name, Home phone, School, Years, Present school address, City, Zip, and Principal. Includes a header '25 Years of Coaching' and a 'Total years coaching golf' field.

## WISCONSIN HIGH SCHOOL GOLF COACHES FALL MEETING

DATE:NOVEMBER 7, 1992

SITE:WINAGAMIE GOLF COURSE - NEENAH, WI.

MEMBERS PRESENT: DAVE BLAKE, TOM CONRAD, TED DEVINE, T.J. DIECK, SINGH GREWAL, GENE HAAS, TIM HANSEN, JOE HARLOW, STEVE HIRD, LEE KACZMAREK, KEN KESSENICH, DON MARX, KRIS MCKICHAN, DICK MCKICHAN, CHUCK MENZEL, ERNIE NIEMANN, MARY BETH NIENHAUS, JIM NOLTNER, AND DENNIS TIZIANI

### CALL TO ORDER

The meeting was called to order by Mary Beth Nienhaus at 9:08 A.M.

### SECRETARY'S REPORT

Minutes from the March 21th meeting were read by Joe Harlow. Singh Grewal moved to accept the minutes as read, seconded by Ernie Niemann. Motion Carried.

### TREASURER'S REPORT

T.J. reported that all bills had been paid from monies available. He expressed a concern that all GMO ticket sale money had not been received yet. A Motion was made by Ernie Niemann, seconded by Dick McKichan that the report be accepted. Motion carried.

### PRESIDENT'S REPORT

Mary Beth reported that Al Forsythe who has retired from teaching had resigned. A question of term of office on this board was discussed. A motion was made by Lee Kaczmarek and seconded by Don Marx that three new board members be added. Motion defeated 6-9 A motion was made by Ernie Niemann and second by Lee Kaczmarek that board members be polled at the March meeting. Everyone would indicate their intention to continue as a board member or resign at that time. Motion carried. The results of the June COACHING ON THE COURSE survey supported the present WIAA rule. The Spring clinic was discussed. DEDE OWENS will conduct the clinic. Date and location are February 26th at Edgewood High School in Madison.

A motion was made by T. J. Dieck and seconded by Ernie Niemann to charge members \$20.00 and non-members \$30.00. Wisconsin coaches who attend and paid the \$30.00 would automatically become WHSGCA members. Motion carried. Dick McKichan and Dave Blake will handle the registration at the clinic. Joe Harlow will be in charge of clinic enrollment. Steve Hird will coordinate the facility set up. Mary Beth will write an article for the WIAA bulletin concerning the clinic. Don Marx will contact Brad Fowler about attracting Illinois coaches to the clinic. A maximum attendance was discussed but not set. A replacement for Joe as membership chairperson was dropped when he indicated an interest in staying on in his present position. Mary Beth reminded board members who had not already done so, to pick up their caps/visors, sweaters and shirts.

Mary Beth, as president will send a letter of thanks to Hornung's for bag tags and Tom Strong for GMO tickets. A discussion about retired coaches who might want to join the association ensued. They can be in the WHSCGA. T. J. Dieck reported that the hall of fame plaques still did not have a home. Gene Haas said we could keep the plaques at the WSGA offices until a permanent location can be found. A survey generated by the WHSGCA has given to all board members. WIAA requested we participate in this survey.

### SPECIAL PROJECTS.

Steve Hird asked about using surplus monies to do something to promote Junior golf. Several ideas including providing bag tags for golf team members were discussed. No action was taken.

### MEMBERSHIP

Joe reported that 112 members have enrolled for 1992-1993 year. Each district or region representative received a list and mailing labels to

contact non members to encourage them to join us.

### FUND RAISING

Lee Kaczmarek reported that the Golf Course Owners Association have offered a coupon book fund raiser. Students who sell a \$39 coupon book would earn \$10 for their school's golf program. This offer is available only to members of the WHSGCA.

### AWARDS

Kris reported to date, five nominations for our consideration have been received. A discussion followed about considering people who have been nominated but not chosen. No action was taken. T.J. Dieck moved, seconded by Ernie Niemann to present plaques 'to coaches who have coached golf for 25 years. Motion carried.

### SUMMER CLINIC

Tom Conrad gave a summary of the 1992 clinic. Discussion about having the clinic at University Ridge ensued. If the fees at The Ridge are over \$69 the association would cover the difference. Don Marx will have more information at the March meeting.

### PUBLIC RELATIONS

Ken asked about the feed back from the letters sent to school administrators. Those present felt it was a very positive move.

### TEE SHIRTS AT STATE TOURNAMENT

Having tee shirts are important but the WIAA reserves the right to sell them to the host school. Don Marx will contact host schools in the WIAA and Ken Kessenich will do the same for 'the WISAA. They will encourage the host schools to make the shirts available.

### WIAA AND WISAA STATE TOURNAMENTS

Steve Hird summarized the action in the WISAA tournament held at South

## WHSGCA Minutes

Hills in Fond du Lac. Marquette was crowned WISAA champs and Marc Wilson the Tournament Medalist. Mary Beth reported La Crosse Central the Champions at Arrowhead, with Keri Sawvell winning the medalist honor.

### NEW BUSINESS

Steve Hird made a motion seconded by T.J. Dieck to select three six person teams for ALL STATE. The boys team would then select 15 honorable mentions and the girls team 10 honorable mentions. Motion carried.

### WSGA REPORT

Gene Haas reported that his staff felt the WISAA boys and the WIAA girls tournament went very well. This was substantiated by the positive comments of both participants and coaches. Gene did inform the WIAA office that advice given by a participant and team member who has finished a round is a violation of the rules. WSGA did name Marc Wilson and Jo Ellen Erdmann boys and girls 'player of the year'.

### GOLF FOUNDATION REPORT

Dennis reported that the Golf Foundation is viable, and under excellent direction from Carl Unis. Junior golf tournament sites have been increased. The Foundation, the PGA, and the GMO are looking into Brown Deer as a possible tournament site. This might require an expenditure of 1.5 million. The money is needed to renovate the lower level of the club house which would then house the offices of the GMO. Because of concerns that the State lacks college programs for women, the Foundation helped support the Whitewater Women's golf program.

### WIAA REPORT

Mary Beth reported that Deb Hauser would be the WIAA staff person for golf. The minutes of the meeting were read. A discussion resulted in the following motion.

T. J. Dieck moved, seconded by Lee Kaczmarek that a letter be sent from the WHSGCA board of directors recommending that the WIAA not drop the girls regional. That letter will be written and sent by T.J.. Motion carried. There was discussion about playing the girls tournament one week earlier and moving it to Janesville's Riverside Golf Course. No action was taken

### COMMITTEE REPORTS

#### NEWSLETTER

Kaz reported that the COACH APPROACH will have a new look each year by changing colors.

#### ALL STATE

First Team:

Keri Sawvell, Erin Carney, Katey Lockrem, Laura Tzakis, Brook Krause, and Joellyn Erdmann

Second Team:

Kelly Miller, Jill Meyer, Jenny Betz, Melissa Sucher, Meghan McCormick, and Jamie Busby

Third Team:

Cindi Ihm, Tiffany Felde, Amy Palmgren, Ann Penn, Kim Grade, and Pam Romero.

#### ADJOURNMENT

A motion made by Don Marx seconded by Ernie Niemann that the meeting be adjourned. Motion carried.

## CGAW "Golf Wisconsin" Program to benefit HS Golf

The Golf Course Association of Wisconsin proposes that the 1993 "Golf Wisconsin" coupon book be sold by the student-athletes participating in interscholastic golf programs at Wisconsin high schools whose coaches are members of the Coaches Association.

Each participating coach will be supplied with brochures and order forms for the 1993 book. The brochures will list the participating courses, the restrictions if any, and an order blank. The CGAW will accept the responsibility for payment and will accept checks, Master Card or Visa in payment. The CGAW will ship all books from their office unless requested to do otherwise.

Each coach will receive a complimentary 1993 book for their efforts.

The cost of the book to the customer will be \$39.87 (including tax and shipping).

The program will receive \$10 from the CGAW for every book sold during the promotion. Checks will be sent every month from the CGAW office based on orders received.

The timing of the promotion should be early Spring as this period is usually the most productive for sales.

The CGAW will handle all customer inquiries through their 800 number and will absorb any losses incurred through incorrect or invalid credit cards and checks.

### Golf Wisconsin Coupon Book

Coaches Name: \_\_\_\_\_  
 School: \_\_\_\_\_  
 School Address: \_\_\_\_\_  
 City \_\_\_\_\_ Zip \_\_\_\_\_  
 School Phone: \_\_\_\_\_

Number of Brochures and Order packets needed: \_\_\_\_\_

Return this form to:

Joe Harlow  
 Kewaskum High School  
 1510 Bilgo Lane  
 Kewaskum, WI 53040-0037

**Coach Must be a membr of the WHSCGA to participate.**

## Sixth Annual Wisconsin High School Golf Coaches Association Tournament, Clinic and Annual Meeting Results

The sixth annual Wisconsin High School Golf Coaches Tournament and annual meeting was again held at the Lake Arrowhead golf course. The days program started with rolls and coffee and a greeting from WHSOCA president Mary Beth Nienhaus who greeted some 65 Wisconsin high school golf coaches association members for the annual WHSOCA meeting. At the completion of the annual meeting, Lake Arrowheads PGA professional Joel Barth and PGA professional Bruce Woodward from Racine Meadbrook C.C. gave a very interesting and informative clinic on how to check for proper body posture and alignment by using a mirror. After a noon luncheon it was time for all coaches to tee it up on the 6,624 yard par 72 Lake Arrowhead Golf Course. The course was in excellent condition.

When the days completion of eighteen holes was over, 1986 champion Howie Ochs of Portage H.S. and Jeff Werner of Oconto H.S. were tied with a score of 77. With birdies on holes three and seven to offset a bogie on holes five and nine, coach Ochs shot a par round of 36 on the front nine to take a one stroke lead over coach Werner's 37. On the back nine holes both players found some

trouble and shot scores of 40 (Werner) and 41 (Ochs). In third place was Steve Lien of Baraboo H.S. with rounds of 40-39=79. Mary Ellen Sjol in of Neillsville won the lady coaches trophy by shooting rounds of 47-40 for a 87.

The low net winner was Jeff Werner with a score of 67. Stu Anderson from Oconto Falls was second with a 69. Chuck Dahlke of Hortonville was third with a 71.

### Course event winners for the tournament were:

Closest to Pin Hole No. 4 - Don Marx Madison Memorial H.S. Closest to Pin in Three Hole No. 7 - Jim Sjol in Neillsville H.S.

Longest Drive Hole No. 8 - Steve Elsner Wrightstown H.S. Closest to Pin in three Hole No. 9 - Brad Bail ie Waupaca H.S. Longest Drive Hole No. 11.- Steve Lien Baraboo H.S. Closest To Pin Hole No. 14 - Jim Sjol in Neillsville H.S. Closest To Pin Hole No. 17 - Harlan Pirlot Appleton West H.S. Closest To Pin in two Hole No. 18 - Mark Pyser Eleva Strum H.S.

### Raffle Prize Winners:

Ulrich Adam Union Grove H.S. Dean Christianson Menomonee Falls H.S. Jim Fauske New London H.S. Gary Hurley Little Chute H.S. Howie Ochs Portage H.S. John Paulson Winneconne H.S. James Sjol in Neillsville H.S. Mary Ellen Sjol in Neillsville H.S. Kent Wichman Johnson Creek H.S. Gayle Wilfong L.P Goodrich H.S.

### 1992 WISCONSIN HIGH SCHOOL GOLF COACHES ASSOCIATION TOURNAMENT SCORES (LAKE ARROWHEAD GOLF COURSE

77 - Howie Ochs, Portage H.S.; Jeff Werner, Oconto H.S.

- 79 - Steve Lien, Baraboo H.S.
- 80 - David Hughes, Menomonie H.S.
- 81 - Tom Conrad, D.C. Everest H.S. Gary Hurley, Little Chute HS. Steve Elsner, Wrightstown H.S. Robert Talajowski, Hartford.
- 82 - Ulrich Adam, Union Grove; Stu Anderson, Oconto Falls; Chuck Dahlke, Hortonville; John Loner gan, Hartford; Dennis Phipps, Tremper HS.
- 83 - Steve Hird, Madison Edgewood
- 84 - Don Marx, Madison Memorial
- 85 - Singh Grewal, Sparta H.S.
- 87 - Jim Fauske, New London; Mark Klawiter, Ladysmith; Chet Polka, Berlin; Mark Ryser, Eleva Strum; Mary Ellen Sjol in, Neillsville
- 88 - Brad Bailie, Waupaca; Ken Kessenich, Puis XI H.S.; Gary Schwerke, Osso-Fairchild
- 99 - T.J. Dieck, Milton; Stuart Dodge, Whitehall; Mel Lewison, Hartford; Mike Sobotta, Arcadia; John Weaver, Menomonee Falls
- 90 - Everett Edmundson, Burlington; Steve Larson, Lancaster
- 91 - Gerald Hibbard, Tomah; Tom Neal, Brookfield East
- 92 - Leo Kerschitz, Union Grove; Tom Nadean, Oskosh West H.S.; Kent Wichman, Johnson Creek
- 93 - Bob Johnson, Fond Du Lac; James Sjol in, Neillsville; George Steffen, Badger H.S.
- 94 - Rod Anderson, Augusta; Dick Malstrom, Medford
- 95 - Nancy Phipps; Tremper H.S.
- 96 - Rick Hugill, Dodgeville
- 97 - Jim Bilot, Eau Claire Memorial H.S.; Jim Chuchwar, Cumberland; Paul Naumann, Brookfield Central H.S.
- 99 - Tim Hanson, Notre Dame Acad.; Bob Schweder, Princeton
- 101 - Dean Christianson, Menomonee Falls; Dave Kilker, Jefferson
- 115 - Jack Hamilton, Oakfield H.S.; Jim Stecker, North Fond Du Lac
- 117 - Gayle Wilfong, L.P. Goodrich H.S.
- 123 - Joni Hanrahan, Princeton
- 124 - David Roberts, Brookfield

## Board Profile

### Ted Devine

Ashwaubenon High School  
Taught at Menomonie,  
Watertown previously  
Graduate of UW EC,  
Coach Girls Golf - 8 years  
Boys Golf - 26 years  
Football - 10 years

### Coaching thought:

"Keep it fun!"

# WIAA Survey on Coaching Shows Support of On-Course Coaching

## Golf Survey Results

### CURRENT WIAA COACHING ON THE COURSE RULE:

Head coaches are allowed to be on the course and coach during competition, however, coaches may give advice ONLY from holing out on a green to teeing off on the next hole. Coaches may give rule options to their own players anytime, and rule options to other competitors ONLY when asked by that competitor.

Which of the following do you favor?

#### Boys/Girls

120 34 Current WIAA Rule.

29 10 Allow head coach to give advice anywhere on the course

97 17 Restrict coach from giving advice anywhere on the course, but continue to indicate coaches should be on the course or available in the club house.

The WIAA is also interested in your input relative to rule clinics or interpretation meetings.

Which of the following do you favor?

65 9 Mandatory WIAA rules interpretation meetings for head coaches.

176 49 An optional rules clinic scheduled according to available clinicians.

2 2 Neither.



Above: Matt Sdano of Milwaukee Pius  
Right: Jon Gaschke of Heritage Christian.



When the idea of coaches being able to coach on the course was first proposed by Lee Kaczmarek in 1990, the majority of golf coaches from around the state seemed to be very opposed to the idea. The WIAA staff and the Board of Control approved the idea, however, because it would encourage coaches to be on the course to monitor the play and behavior of their golfers. Three short years later a majority of both boys and girls coaches now approve of this rule change with 193 coaches preferring one or the other coaching opportunity and 114 coaches indicating they wanted no coaching allowed.

The 193 coaches have recognized the help they provide under the stress of competition. The NCAA Division I college coaches recognize the need for their "expert" players to receive coaching help during competition. High school coaches now recognize our less talented high school golfers need our help as well.

## About Dede Owens

Dede Owens first made her name as member of the LPGA Tour in the early 1970's. Her promise appeared great when she began to compete on the circuit. Then, in 1972, she was diagnosed as having Hodgkin's disease. While battling her illness, Owens' commitment to golf took on a new light. Her desire was no longer to win championships, but to make golfers feel like Champions.

Owens grew-up in a family of educators, and she earned a doctorate from the University of Virginia in education. Her love for education drew her toward the instruction of golf. After years of dedication, Owens is now a nationally recognized educator in golf. Her peers voted her National Teacher of the Year in 1978, and in 1986, the National Golf Foundation awarded her its Joe Graffis Award for outstanding service and dedication to the education of golf.

# Fall 1992 State High School Golf Results

## WSGA Junior Rankings Top 15

### BOYS:

Mark Wilson, Oconomowoc	1145
Brad Nelson, Blackhawk CC	745
Andy Podolak, Johnson Park	622.5
Brett Schauer, Wausau CC	490
Keith Dory, Dretzka Park	452.5
Andy Hahn, Stevens Point CC	452.5
David Kopp, Stevens Point CC	440
Brad Hanson, North Shore CC	438
Aaron Dobberstein, New London	422.5
Trent David, Riveredge CC	415
Aivars Erkmanis, Tuckaway	392.5
John Shipshock, Nagawaukee	377.5
David Roesch, Tripoli CC	302.5
Eric Goldapske, Lake Windsor	285
Chris Kleine, Hartford CC	272.5

### Girls

Joellyn Erdmann, Fox Valley	865
Breinnan Pirk, Kenosha CC	667
Laura Tzakis, Maple Bluff CC	600
Darby Schnarr, Blackhawk	587.5
Katie Lochrem, Racine CC	470
Brooke Krause, Watertown	465
Keri Sawvell, Prairie du Chein	405
Kim Grade, Hayward CC	392.5
Jenny Betz, LaCrosse CC	372.5
Brandy Ferdinand, Nakoma	352
Erin Carney, Cedar Creek CC	344.5
Jill Myers, Cedar Creek CC	317.5
Meghan McCormick, Nakoma	232.5
Amy Palmgren, Racine CC	185
Kelly Miller, Sheboygan TC	180

## WHSCGA Girls All State Playing Team

### First Team:

Joellyn Erdmann, Appleton Xavier  
Keri Sawvell, Prairie du Chein  
Erin Carney, LaCrosse Central  
Katie Lochrem, Racine Horlick  
Laura Tzakis, Madison West  
Brooke Krause, Watertown

### Second Team:

Melissa Sucher, Nicolet  
Kim Grade, Hayward  
Meghan McCormick, Madison West  
Kelly Miller, Sheboygan North  
Jill Meyers, LaCrosse Central  
Jennifer Betz, LaCrosse Central

### Third Team:

Cindi Ihm, Lancaster  
Tiffany Felde, LaCrosse Central  
Amy Palmgren, Racine Horlick  
Ann Penh, Sun Prairie  
Pam Romero, Madison East  
Jamie Busby, Divine Savior  
**Honorable Mention:**  
Danielle Loomis, Milton, Amy Diemer,  
Nicky Lock, Erica Roberts, Marinette,  
Angie Wendels, Fond du Lac; Andrea  
Meeker, Milton; Shane Drury,  
Brookfield Central; Amy Mikaelian,  
Racine Horlick; Jessica Lurie, Sarah  
Teitgen, Erin Olsen, Alexa Antonio,  
Nicolet; Monica Hinnendael, Madison  
Memorial; Molly Schlueter, Sun  
Prairie; Patty Frohna, Waukesha  
South; Maggie Floyd, Melissa Schwis-  
ter, Divine Savior; Erika Stockwell,  
Andrea Klee, Joanna Klee, Appleton  
West.

## 1992 Madison Golf Invitational

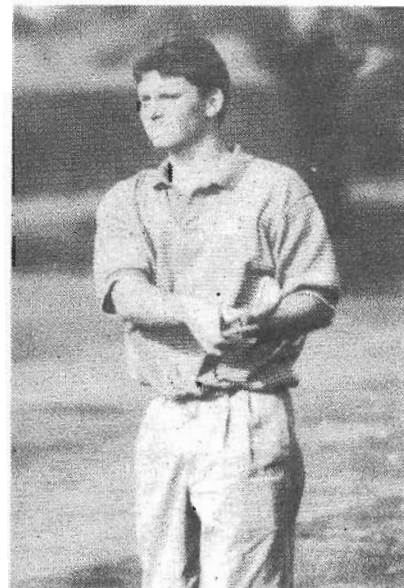
### Team:

1. LaCrosse Central	329
2. Nicolet	365
3. Appleton West	378
4. Divine Savior	379
5. Madison West	385
Sun Prairie	385
7. Fond du Lac Goodrich	397
8. Watertown	398
9. Madison LaFollette	403
10. Sheboygan North/South	404
11. Edgewood	409
12. Madison Memorial	421
13. Homestead	423
14. Milton	429
Mukwonago	429
16. Lancaster	449
17. Darlington	450
18. Delavan-Darien	452
19. Waukesha North/South	457
20. Oconomowoc	465
21. East Troy	515
22. Madison East	537

### Individual Honors

1. Laura Tzakis, Mad West	77
2. Erin Carney, LaCrosse Cent	79
3. Brooke Krause, Watertown	81
Melissa Sucher, Nicolet	81
5. Jenny Betz, LaCrosse Cent	82
Meghan McCormick, Mad W	82
7. Tiffany Felde, LaC Central	83
8. Ann Penn, Sun Prairie	84
9. Jill Meyers, LaC Central	85
10. Cindy Ihm, Lancaster	86

Below: Mark Wilson of Wisconsin Lutheran.



## Appleton West Invitational

1. LaCrosse Central	171	15. Green Bay Preble	215
2. Nicolet	178	16. Homestead	216
3. Appleton West	188	17. Oconomowoc	220
4. Marinette	191	18. Neenah	221
5. Sun Prairie	192	19. Oconto Falls	228
5. Divine Savior	192	20. Notre Dame Academy	233
7. Watertown	194	21. Ap West Orange	243
8. Brookfield	195	22. Sheboygan	Inc
9. Fond du Lac	197	Individual	
10. Kettle Moraine	203	1. Erin Carney LaX	40
10. Edgewood	203	2. Angela Roldos, BC	41
12. Waukesha	210	2. Ann Penn, SP	41
13. Mukwonago	213	2. Kelly Miller, She	41
14. Ap West Blue	214	5. Alexa Antonio, Nic	42

## Sheboygan North/South Invitational

Team	
1. Appleton West	387
2. Madison Memorial	407
3. Madison Edgewood	418
4. Watertown	421
5. Madison LaFollette	422
6. Sheboygan North/South	423
7. West Bend East	426
8. Brookfield	436
9. Appleton East	437
10. Notre Dame	449
11. West Bend West	426
12. Hartford	504
13. Madison East	553
14. Madison West	inc
Individual	
1. Brooke Krause, Watertown	80
2. Laura Tzakis, Mad West	81
3. Meghan McCormick, M West	84
4. Kelly Miller Sheboygan	87
5. Joanna Klee App West	88
6. Monica Hinnendale, Mad Memor	94
7. Kara Thiel, Sheboygan	94
8. Monica Worzella, WB East	95
9. Kim Reid, Mad LaFollette	97
10. Andrea Klee, App West	98

## Mukwonago Invitational

Team	
1. Nicolet	374
2. Goodrich	386
3. Case	388
4. Horlick	389
5. Watertown	390
6. Milton	392
7. Mukwonago	393
8. Brookfield	404
9. Homestead	422
10. Kettle Moraine	462
11. Delavan-Darien	464
12. Park	465
13. Tremper	481
14. Whitewater	485
15. East Troy	492
16. Waukesha	493
17. Oconomowoc	499
18. Union Grove	501
19. Salem	505
20. Elkhorn	522
21. Burlington	558
22. Franklin	inc
22. Arrowhead	inc
Medalist	
Brooke Krause, Watertown	79

## Green Bay East "Lady Red Devil"

Team	
1. Appleton West	396
2. Marinette	420
3. Appleton East	453
3. Oconto Falls	453
5. Green Bay Preble	456
6. Green Bay Notre Dame	461
7. Green Bay East	468
8. Green Bay Southwest/West	578
Individual	
1. Erika Stockwell Appleton West	95
2. Amy Diemer Marinette	99
3. Joanna Klee, Appleton West	100
4. Andrea Klee Appleton West	101
4. Nicky Lock Marinette	101

## Watertown Invitational

1. LaCrosse Central	342
2. Watertown	381
3. Sun Prairie	393
4. Racine Horlick	393
5. Milton	409
6. Kettle Moraine	425
7. Waukesha	477
8. LaCrosse Logan	485
9. Kenosha Tremper	584
10. Arrowhead	640
11. Kenosha Bradford	654
Individual	
1. Jenny Betz LaCrosse Central	80
2. Brooke Krause Watertown	81
3. Erin Carney LaCrosse Central	83
4. Tiffany Felde LaCrosse Central	86
5. Andrea Meeker Milton	89
6. Katey Lockrem Racine Horlick	89
7. Patti Frohna Waukesha	89
8. Amy Palmgren Racine Horlick	90
9. Trish Magaw Kettle Moraine	91
10. Ann Penn Sun Prairie	92



Below: 1992 WIAA Girl's State Champions LaCrosse Central; The team was comprised of: Jill Meyers, Erin Carney, Jennifer Betz, Tiffany Felde, Kate Theune and Coach Mardel Allen.

Above: 1992 WISAA State Golf Champions, Marquette High School. Row 1: Patrick Jennings, Coach Steve Hessler, John Cesarz. Row 2: Matt Mattoli, Mark Peterson, Steve Kubiak.

Below: Marquette's Mark Peterson follows a shot on way to a second place finish at the WISAA State Championships.





# Imagery for Enhanced Performance

Dede Owens

There are two ways to practice most golf skills: physical practice and mental practice. By learning to use imagery to improve your golf, not only will you double your practice time, but you will be able to practice before every shot.

Most good golfers use imagery to rehearse their shots. You may have seen the Pros close their eyes to imagine a beautiful swing or just stand momentarily as if preoccupied by a thought. This technique of imagining a shot before actually taking it allows you to check your strategy and essentially have a "mulligan" on every shot. To use imagery you must be able to key into all of your senses: seeing, hearing, feeling, touching, tasting, and so on. If you can relax and use those stored images, you will become a much improved golfer.

## WHY IS IMAGERY IMPORTANT?

Every shot in golf is slightly different from the last shot, yet similar in that the same muscles and emotions may be used. It is therefore important to be aware of our bodies before we ever hit a shot. Imagery allows you to detect current levels of tension and plan by capitalizing on past experience.

Close your eyes and imagine your favorite food. If you are thinking about a big juicy hamburger with onions and french fries, you may be able to smell it, see it, feel the texture of the meat and the bun and the fries, feel your mouth and throat chew and swallow, and so forth. You can probably imagine in many different senses. Similarly, if you imagine putting a 15-foot uphill putt, you may be able to see the line of the putt, feel the putter in your hands, sense the smooth stroke, and hear the ball hit squarely in the cup. Each of these sensory experiences will reinforce your skill in putting.

Imagery can also be used to practice a new skill. Imagine that you are trying to learn to fade the ball. Watch a good golfer do it, or observe it on videotape or TV. Then imagine your own body executing that shot. Sense the different feelings in your hands as the clubhead slides inside the ball. Think about the

different flights of the ball as it curves through the air.

Self-confidence can also be enhanced by imagery of your own golf skills. If you can see yourself hit that 5-iron over the water and land near the pin, you will be better able to execute the shot. Can you picture yourself hitting each of the clubs in your bag?

## HOW TO IMAGINE GOLF SHOTS

Using imagery to help your golf is as natural as sleeping every night. When you dream, you sometimes have very realistic thoughts and images. Have you ever awakened and wondered if you really had that conversation with someone or if you really failed that test or stepped off that wall? Dreams are sometimes so realistic that it is hard to tell them from reality. The vividness of dreams can be used to help your golf game through the use of imagery. If you think hard enough about a particular shot, your muscles and all other senses will respond. The key is to use those responses to help you prepare to actually execute the shot.

The first step in using imagery is to be relaxed so that you can "tune in" to all of your senses. The "take a deep breath" technique discussed in Step 11 is a good way to help you focus on the images in your mind. For example, on a par 4 hole with a great landing area approximately 220 yards out, can you imagine the feel of your drive? The way the ball looks in the air? How the club feels as it accelerates and makes contact with the ball? The sound of a nice solid hit?

Every golfer has the capacity to imagine shots. Not everyone conjures up a visual image. For some it is a feeling in the muscles (kinesthetic imagery), for others it is the sound of the club hitting the ball (auditory imagery), and for others it is the visual image of the ball sailing through the air. If you can remember and repeat any of these images, you can use them to help you be a better golfer. It does not matter if you "see the shot" or "feel the swing." The important thing is that you have been able to focus your

attention on the memory (image) of previously executed shots. If someone asks you to imagine hitting a perfect drive off the tee, would you feel it, see it, or hear it? Anyone of those sensations will help, and being able to imagine in two or more sensory modalities will benefit you all the more.

One of the best ways to tune into your specific mode of imagination is to reflect on a great shot. The next time you are on the practice tee or course and hit a really great shot, take a moment and "relive" that shot. DO an "instant replay" in your mind. When you think about that great shot, do you see it, feel it, hear it, or what? The best way to discover your primary mode of imagination is to do it (imagine). Remember the last dream you had? Did you wake up shaking or breathing hard, or did you have a vivid visual image? Your mind has a hard time separating dreams from reality. Both excite your muscles and activate your brain, and both can be used to build your confidence.

As part of each preshot routine, take a moment to imagine the shot you are about to hit. If you are a visualizer, imagine the flight of the ball, and "see" the ball land at the desired target. If you imagine in terms of muscle memory or kinesthesia, "feel" the swing before you actually produce it. Can you imagine actually hearing the clubhead hit the ball? In this way, you have a practice shot, or mulligan, for each shot.

It is important to remember that your imagery should always be about the desired shot. Some golfers accidentally doubt their abilities and may inadvertently be affected by a negative image. For example, imagine playing a par 5 hole with a wide-cutting across the fairway at about 180 yards out. You must decide whether to drive over the water hazard or lag up short of it. Let's say you decide to "go for it" but have a little doubt in the back of your mind. You may even accidentally imagine your ball landing in the water (or you might even take out a "water ball" as some nonconfident golfers do!). These negative images send signals to your body that end up focus-