



The Coach Approach

Wisconsin High School Golf Coaches Association Newsletter

Volume V Issue 3

July 1991



Far Left: Division III Medalist, Travis Reineking and Left: Dave Bobber, Division II Medalist at the WIAA State Tournament.

Above: Division I WIAA State Winners, Sun Prairie High School.

On the Inside:

All State Teams - Page 2

**Tournament Results -
Page 3 & 6**

**WSGA Player of the
Year Points - Page 4**

1990-91 All State Teams Named

Boys Playing Team

First Team

| | |
|----------------|--------------|
| Jason Allen | SPASH |
| Dave Bobber | Kimberly |
| Chris Caulum | Mad Edgewood |
| Brad Nelson | Middleton |
| Mark Scheibach | Fond du Lac |

Second Team

| | |
|----------------|--------------|
| Travis Becker | Holman |
| Brian Dahle | Badger |
| Kevin Vena | Mad Memorial |
| Jeff Walcott | Plymouth |
| Brent Wileman | Edgerton |
| Jason Woodbury | D.C. Everest |

Third Team

| | |
|----------------|---------------|
| Andy Boedecker | Howards Grove |
| Dan Grote | Mad Memorial |
| Paul Koszarek | Milw Marshall |
| Jason Kuckkan | Watertown |
| John Shipshock | Arrowhead |

Honorable Mention

| | |
|------------------|---------------|
| Brian Blough | Kimberly |
| Jason Daubner | Gibraltar |
| John Ehlinger | Watertown |
| Ray Habelman | Tomah |
| Mike Heidenreich | Fond du Lac |
| Carter Johnson | Wauk South |
| Dan Kiley | Stoughton |
| Brian Kohn | Platteville |
| Jon Loth | Racine Case |
| Jeff Pajula | Rice Lake |
| Mike Scott | Racine Case |
| Craig Thome | Howards Grove |
| Steve Sosnowski | Mad Edgewood |
| Jason Winchel | Tomah |

Boys Academic Team

| | |
|-----------------|---------------|
| Kevin Acker | Waunakee |
| Nathan Baldwin | Wauk South |
| Michael Bartzew | Oakfield |
| Matthew Bersch | Milw Marshall |
| Joel Blair | Wauk South |
| Brian Blough | Kimberly |

Andy Boedecker
 Matt Brewer
 Mischa Cichocki
 Chris Caulum
 Theron Dodson
 John Ehlinger
 Nate Fethke
 Mike Funk
 Daniel Gehrand
 John Gersmeyer
 John Goetluck
 Jason Gough
 Marty Grubanowitch
 Ray Habelman
 Patrick Haverty
 Jason Holt
 Jacob Heinzelmann
 Justin Hill
 Hank Hoffman
 Rob Hughes
 Brendan Keough
 Dan Kiley
 Paul Koszarek
 Jason Krueger
 Jason Kuckkan
 Shawn Kundert
 Scott Mueller
 Jason Nuss
 Jim Peterman
 Brian Pierquet
 Andy Rutlin
 Ryan Schremp
 Jamie Weber
 Scott Weber
 Jason Winchel
 Scott Wilson

Howards Grove
 Oconomowoc
 DeForest
 Mad Edgewood
 Wausau East
 Watertown
 Wausau East
 Milw Lutheran
 Union Grove
 G B Preble
 Westosha Cent
 Badger
 Milw Lutheran
 Tomah
 Darlington
 Westosha Cent
 Kettle Moraine
 G B Southwest
 Milw Lutheran
 Waunakee
 Wausau East
 Stoughton
 Milw Marshall
 Sparta
 Watertown
 Darlington
 Milw Lutheran
 G B Southwest
 Mad Memorial
 G B Preble
 Wausau East
 Wausau East
 Platteville
 Platteville
 Tomah
 Waunakee

Girls Academic Team

Vicki Hedlund
 Kristen Herrick
 Kristen Johnson
 Tricia Kramer
 Lori Olson
 Ann Penn
 Gretchen Schmitz
 Julie Terhark
 Jackie Tyler
 Jennifer Zucco
 Meredith Zucco

Spoooner
 Spoooner
 Delavan/Darien
 Sparta
 Sparta
 Sun Prairie
 Spoooner
 Spoooner
 Appleton East
 Sparta
 Sparta

New Members Voted into the Coaches Hall of Fame for 1991

Five new members were elected into the Wisconsin Golf Coaches Association Hall of Fame in 1991.

Hugh Stewart (Racine Horlick 1948-73)
 6 Conference Championships;
 14 State Tournament Qualifiers, 2 State Championships
John Ashenfelter (Janesville Craig 1957-1989)

Started Janesville (Ashenfelter) Invitational, Many teams qualified for the State Tournament.

Ted Callis (Madison East 1960-1980)
 Several Conference Championships, 10 teams qualified for the State Tournament, 3 State Championships

Gregg Shimanski (Madison Edgewood)
 Created the Wisconsin High School Golf Coaches Association, 2 WISAA State Championships

Ken Cheek (Eagle River Northland Pines 26 years)
 14 conference championships, 5 teams qualified for the State Tournament.

Golf Foundation Invitation Slated for August 14 & 15

The Golf Foundation Invitational Golf Tournament will be conducted this year on August 14 & 15th at Lake Arrowhead Golf Club.

The leading point earners according to the WSGA Point Chart will be invited to compete. An extra attraction will be an exhibition by former outstanding Wisconsin Juniors now playing in college.

1991 Invitational Results

WIAA State Championship

at Fox Hills C.C., Mishicott

Division 1

| | |
|------------------------|-----|
| 1. Sun Prairie | 660 |
| 2. Middleton | 680 |
| 3. D.C. Everest | 684 |
| 4. Racine Case | 685 |
| 5. Appleton East | 688 |
| 6. Sheboygan North | 692 |
| 7. Grafton | |
| Racine Horlick | 694 |
| 8. Green Bay Southwest | 695 |
| 9. Beaver Dam | |
| Marshfield | 698 |
| 11. Janesville Craig | 701 |
| 12. Badger | 702 |
| 13. Homestead | 706 |
| 14. Waukesha North | 733 |
| 15. Wauwatosa East | 742 |

Individual Scores

| | |
|------------------------------|-----|
| Eric Goldapske, Sun Prairie | 156 |
| Ryan Clark, Wauwatosa East | |
| Brad Nelson, Middleton | 158 |
| Ryan Koski, Eau Claire North | 160 |
| Jon Loth, Racine Case | 162 |
| Mark Scheibach, Fond du Lac | |

| | |
|------------------------------|-----|
| Ryan Helminen, Appleton East | |
| Jeff Stewart, Racine Horlick | |
| Brent McFerren, Beloit | 164 |
| Kevin Vena, Madison Memorial | 165 |

Division 2

| | |
|------------------|-----|
| 1. Brown Deer | 648 |
| 2. Kimberly | 662 |
| 3. Hayward | 679 |
| 4. Lancaster | 680 |
| 5. Neilsville | 682 |
| 6. Howards Grove | 688 |
| 7. Platteville | 698 |
| 8. Shorewood | DQ |

Individual Scores

| | |
|-------------------------------|-----|
| Dave Bobber, Kimberly | 154 |
| Brent Wileman, Edgerton | 155 |
| Brian Dow, Shorewood | 158 |
| Jeff White, Brown Deer | |
| Tim Wilmot, Brown Deer | 159 |
| Brian Mitchell, Wis Dells | 162 |
| Matt Kamish, Unity | |
| Eric Oliver, Brodhead | |
| Andy Boedecker, Howards Grove | 163 |

Brian Blough, Kimberly
Dan Sullivan, Brown Deer

Division 3

| | |
|----------------------------|-----|
| 1. Elkhart Lake Glenbeulah | 681 |
| 2. Arcadia | 695 |
| 3. Eleva-Strum | 696 |
| 4. Fennimore | 706 |
| 5. Grantsberg | 716 |
| 6. Wabeno | 729 |
| 7. Laona | 752 |
| 8. Montello | 764 |

Individual Results

| | |
|--------------------------------|-----|
| Jon Olson, Beileville | 163 |
| Travis Reineking, Elkhart Lake | |
| Mark Strapp, Grantsberg | 165 |
| Trent Thacker, Eleva-Strum | 166 |
| Craig Curry, Darlington | 167 |
| Chris Olson, Darlington | 169 |
| Dennis Simonis, Wabeno | |
| Jeff Gregor, Elkhart Lake | 171 |
| Phil Kaz, Thorp | 172 |
| Josh Kilmek, Arcadia | |
| Kevin Kenney, Fennimore | |

37th Annual Janesville (Ashenfelter) Invitational Golf Tournament

May 4, 1991

Team Results

| | |
|-----------------------|-----|
| 1. Madison Edgewood | 325 |
| 2. Watertown | 327 |
| 3. Wauwatosa East | 327 |
| 4. Waukesha South | 334 |
| 5. DeForest | 336 |
| 6. Beaver Dam | 337 |
| Sun Prairie | |
| 8. Madison Memorial | 338 |
| 9. Racine Horlick | 340 |
| 10. Greendale | 341 |
| 11. Racine Case | 342 |
| 12. Racine Park | 343 |
| 13. Janesville Craig | 344 |
| Waukesha North | |
| 15. Oconomowoc | 345 |
| 16. Hartland | 346 |
| 17. Janesville Parker | 347 |
| 18. Madison West | 348 |
| 19. Shorewood | 350 |

| | |
|-------------------------|-----|
| 20. Eau Claire Memorial | 354 |
| Kenosha Tremper | |
| 22. Cudahy | 355 |
| 23. Stoughton | 356 |
| 24. Eau Claire North | 357 |
| 25. South Milwaukee | 359 |
| 26. Beloit | 360 |
| Glendale | |
| 28. Spring Green | 362 |
| 29. Kettle Moraine | 368 |
| 30. Burlington | 370 |
| 31. Brookfield Central | 372 |
| 32. Madison LaFollette | 378 |
| 33. Westosha | 384 |
| 34. Delavan-Darien | 389 |
| 35. Oak Creek | 400 |
| 36. West Allis Hale | 403 |
| 37. Hartford | 404 |
| 38. Madison East | 415 |

Individual Leaders

| | |
|------------------------------|----|
| Jeff Stewart- Racine Horlick | 73 |
| Ryan Clark- Wauwatosa East | 76 |
| Brent McFerran- Beloit | 76 |
| Chris Caulum- Edgewood | 76 |
| Dan Kiley- Stoughton | 78 |
| Bill Kujawa- Cudahy | 78 |
| Erik Busse- DeForest | 78 |
| Dan Grote- Mad Memorial | 78 |
| Dave Distefano- Craig | 78 |
| Jason Kuckkan- Watertown | 78 |

WSGA Boy's Junior Player of the Year Point System

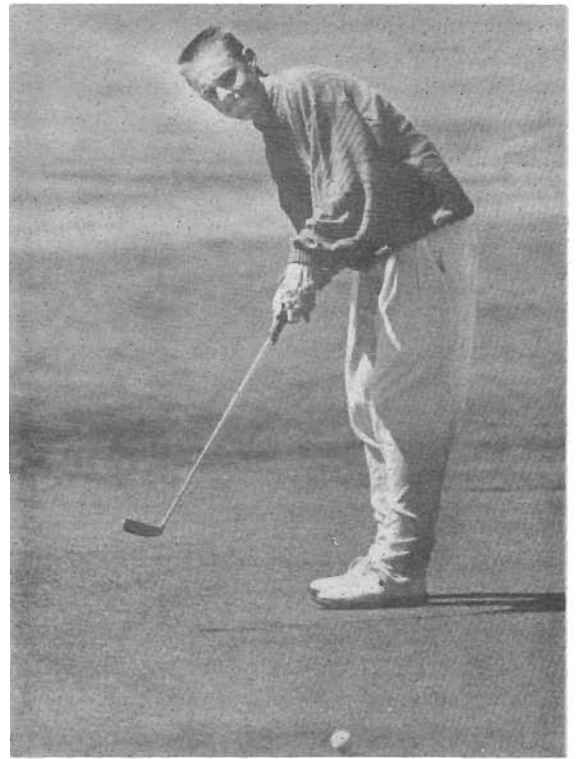
| Stroke Play Events | 1 | 2 | 3 | 4 | 5 | 6 | 7 | 8 | 9 | 10 | 11 | 12 | 13 | 14 | 15 | 16 | 17 | 18 | 19 | 20 | 21 | 22 | 23 | 24 | 25 | 26 | 27 | 28 | 29 | 30 | 36 | Sec |
|-------------------------------|--------|-----------|-----|-----------------|-----|-----------------|-----|--------------------------|-----|--------------------------|-----|-----------|-----|----------------|----|---------------|----|-----------------|----|----|----|----|----|----|----|----|----|----|----|----|----|-----|
| | Cut | Qu | Qu | Qu | Qu | Qu | Qu | Qu | Qu | Qu | Qu | Qu | Qu | Qu | Qu | Qu | Qu | Qu | Qu | Qu | Qu | Qu | Qu | Qu | Qu | Qu | Qu | Qu | Qu | Qu | Qu | Qu |
| USGA Open | 500 | 400 | 350 | 300 | 250 | 200 | 175 | 150 | 140 | 130 | 120 | 110 | 100 | 90 | 80 | 75 | 70 | 65 | 60 | 55 | 50 | 45 | 40 | 35 | 30 | 25 | 20 | 15 | 10 | 5 | 50 | 25 |
| USGA Open Local Qualifier | 100 | 80 | 70 | 60 | 55 | 50 | 45 | 40 | 35 | 30 | 25 | 20 | 15 | 10 | 5 | | | | | | | | | | | | | | | | | |
| USGA Amateur Sectional Q | 30 | 25 | 20 | 15 | 10 | 5 | | | | | | | | | | | | | | | | | | | | | | | | | | |
| USGA Publnx Sect. Qual. | 25 | 20 | 15 | 10 | 5 | | | | | | | | | | | | | | | | | | | | | | | | | | | |
| USGA Junior Sectional Qu. | 60 | 45 | 40 | 35 | 30 | 25 | 20 | 15 | 10 | 5 | | | | | | | | | | | | | | | | | | | | | | |
| Wisconsin State Open | 300 | 225 | 200 | 180 | 160 | 150 | 140 | 130 | 120 | 110 | 100 | 90 | 85 | 80 | 75 | 70 | 65 | 60 | 55 | 50 | 45 | 40 | 35 | 30 | 25 | 20 | 15 | 10 | 5 | 20 | 10 | |
| PGA National Junior | 250 | 200 | 180 | 160 | 150 | 140 | 130 | 120 | 110 | 100 | 90 | 80 | 75 | 70 | 65 | 60 | 55 | 50 | 45 | 40 | 35 | 30 | 25 | 20 | 15 | 10 | 5 | | | | | |
| WSGA State Amateur | 250 | 200 | 180 | 160 | 150 | 140 | 130 | 120 | 110 | 100 | 90 | 80 | 75 | 70 | 65 | 60 | 55 | 50 | 45 | 40 | 35 | 30 | 25 | 20 | 15 | 10 | 5 | | | | | |
| PGA National Junior Qualifier | 50 | 35 | 30 | 25 | 20 | 15 | 10 | 5 | | | | | | | | | | | | | | | | | | | | | | | | |
| WPLA Ray Fischer 72 Hole | 150 | 110 | 100 | 90 | 85 | 80 | 75 | 70 | 65 | 60 | 55 | 50 | 45 | 40 | 35 | 30 | 25 | 20 | 15 | 10 | 5 | | | | | | | | | | | |
| WSGA State Junior | 200 | 150 | 125 | 110 | 100 | 95 | 90 | 85 | 80 | 75 | 70 | 65 | 60 | 55 | 50 | 45 | 40 | 35 | 30 | 25 | 20 | 15 | 10 | 5 | | | | | | | 5 | |
| WPGA Junior | 200 | 150 | 125 | 110 | 100 | 95 | 90 | 85 | 80 | 75 | 70 | 65 | 60 | 55 | 50 | 45 | 40 | 35 | 30 | 25 | 20 | 15 | 10 | 5 | | | | | | | | |
| GFW Junior Invitational | 200 | 150 | 125 | 110 | 100 | 95 | 90 | 85 | 80 | 75 | 70 | 65 | 60 | 55 | 50 | 45 | 40 | 35 | 30 | 25 | 20 | 15 | 10 | 5 | | | | | | | | |
| WIAA/WISAA High School | 150 | 110 | 100 | 90 | 85 | 80 | 75 | 70 | 65 | 60 | 55 | 50 | 45 | 40 | 35 | 30 | 25 | 20 | 15 | 10 | 5 | | | | | | | | | | | |
| Class B & C | 150 | 100 | 75 | 50 | 25 | 10 | | | | | | | | | | | | | | | | | | | | | | | | | | |
| AJGA Events | 100 | 75 | 60 | 50 | | | | | | | | | | | | | | | | | | | | | | | | | | | | |
| Junior World | 50 | 35 | 20 | 10 | | | | | | | | | | | | | | | | | | | | | | | | | | | | 20 |
| Milwaukee Sentinel | 50 | 35 | 30 | 25 | 20 | 15 | 10 | 5 | | | | | | | | | | | | | | | | | | | | | | | | |
| WPLA 36-Hole | 50 | 35 | 30 | 25 | 20 | 15 | 10 | 5 | | | | | | | | | | | | | | | | | | | | | | | | |
| GFW/WPGA Junior Tour | 60 | 45 | 40 | 35 | 30 | 25 | 20 | 15 | 10 | 5 | | | | | | | | | | | | | | | | | | | | | | |
| Badger State Games | 50 | 35 | 30 | 25 | 20 | 15 | 10 | 5 | | | | | | | | | | | | | | | | | | | | | | | | |
| Match Play Events | Winner | Runner Up | | Semifinal Loser | | 1/4 Final Loser | | 3 rd Rnd Loss | | 2 nd Rnd Loss | | Qualifier | | Medalist Qual. | | Local Qualify | | Special Remarks | | | | | | | | | | | | | | |
| USGA Amateur | 400 | 250 | | 175 | | 125 | | 100 | | 70 | | 40 | | 50 | | see Stroke | | Quality 64 | | | | | | | | | | | | | | |
| USGA Public Links | 300 | 200 | | 150 | | 110 | | 70 | | 50 | | 20 | | 25 | | see stroke | | Quality 64 | | | | | | | | | | | | | | |
| USGA Junior | 300 | 200 | | 150 | | 110 | | 80 | | 50 | | 20 | | 25 | | see stroke | | Quality 64 | | | | | | | | | | | | | | |
| WSGA State Match Play | 200 | 150 | | 110 | | 80 | | 50 | | 20 | | 10 | | 25 | | | | Quality 64 | | | | | | | | | | | | | | |
| Western Junior | 250 | 175 | | 125 | | 100 | | 75 | | 40 | | 15 | | 20 | | | | Quality 64 | | | | | | | | | | | | | | |
| Junior Masters (17-18) | 200 | 150 | | 125 | | 100 | | 50 | | 20 | | 10 | | 5 | | | | Quality 32 | | | | | | | | | | | | | | |
| Junior Masters (15-18) | 75 | 50 | | 30 | | 20 | | 10 | | 5 | | 5 | | | | | | Quality 32 | | | | | | | | | | | | | | |
| AJGA Match Play Events | 100 | 75 | | 50 | | | | | | | | | | | | | | | | | | | | | | | | | | | | |

WSGA Girl's Junior Player of the Year Point System

| Stroke Play Events | 1 | 2 | 3 | 4 | 5 | 6 | 7 | 8 | 9 | 10 | 11 | 12 | 13 | 14 | 15 | 16 | 17 | 18 | 19 | 20 | 21 | 22 | 23 | 24 | 25 | 26 | 27 | 28 | 29 | 30 | 36 | Sec |
|-------------------------------|--------|-----------|-----|-----------------|-----|-----------------|-----|--------------------------|-----|--------------------------|-----|-----------|-----|----------------|----|---------------|----|-----------------|----|----|----|----|----|----|----|----|----|----|----|----|----|-----|
| | Cut | Qu | Qu | Qu | Qu | Qu | Qu | Qu | Qu | Qu | Qu | Qu | Qu | Qu | Qu | Qu | Qu | Qu | Qu | Qu | Qu | Qu | Qu | Qu | Qu | Qu | Qu | Qu | Qu | Qu | Qu | Qu |
| USGA Womens Open | 500 | 400 | 350 | 300 | 250 | 200 | 175 | 150 | 140 | 130 | 120 | 110 | 100 | 90 | 80 | 75 | 70 | 65 | 60 | 55 | 50 | 45 | 40 | 35 | 30 | 25 | 20 | 15 | 10 | 5 | 50 | 25 |
| PGA National Junior | 250 | 200 | 180 | 160 | 150 | 140 | 130 | 120 | 110 | 100 | 90 | 80 | 75 | 70 | 65 | 60 | 55 | 50 | 45 | 40 | 35 | 30 | 25 | 20 | 15 | 10 | 5 | | | | | |
| PGA National Junior Qualifier | 50 | 35 | 30 | 25 | 20 | 15 | 10 | 5 | | | | | | | | | | | | | | | | | | | | | | | | |
| WWSGA Women's Stroke Play | 250 | 200 | 180 | 160 | 150 | 140 | 130 | 120 | 110 | 100 | 90 | 80 | 75 | 70 | 65 | 60 | 55 | 50 | 45 | 40 | 35 | 30 | 25 | 20 | 15 | 10 | 5 | | | | | |
| WPGA Junior | 200 | 150 | 125 | 110 | 100 | 95 | 90 | 85 | 80 | 75 | 70 | 65 | 60 | 55 | 50 | 45 | 40 | 35 | 30 | 25 | 20 | 15 | 10 | 5 | | | | | | | | |
| GFW Junior Invitational | 200 | 150 | 125 | 110 | 100 | 95 | 90 | 85 | 80 | 75 | 70 | 65 | 60 | 55 | 50 | 45 | 40 | 35 | 30 | 25 | 20 | 15 | 10 | 5 | | | | | | | | |
| WIAA High School | 150 | 110 | 100 | 90 | 85 | 80 | 75 | 70 | 65 | 60 | 55 | 50 | 45 | 40 | 35 | 30 | 25 | 20 | 15 | 10 | 5 | | | | | | | | | | | |
| AJGA Events | 100 | 75 | 60 | 50 | | | | | | | | | | | | | | | | | | | | | | | | | | | | |
| Junior World | 50 | 35 | 20 | 10 | | | | | | | | | | | | | | | | | | | | | | | | | | | | 20 |
| Milwaukee Sentinel | 50 | 35 | 30 | 25 | 20 | 15 | 10 | 5 | | | | | | | | | | | | | | | | | | | | | | | | |
| GFW/WPGA Junior Tour | 60 | 45 | 40 | 35 | 30 | 25 | 20 | 15 | 10 | 5 | | | | | | | | | | | | | | | | | | | | | | |
| Badger State Games | 50 | 35 | 30 | 25 | 20 | 15 | 10 | 5 | | | | | | | | | | | | | | | | | | | | | | | | |
| Match Play Events | Winner | Runner Up | | Semifinal Loser | | 1/4 Final Loser | | 3 rd Rnd Loss | | 2 nd Rnd Loss | | Qualifier | | Medalist Qual. | | Local Qualify | | Special Remarks | | | | | | | | | | | | | | |
| USGA Women's Amateur | 400 | 250 | | 175 | | 125 | | 100 | | 70 | | 40 | | 50 | | 15 | | Quality 64 | | | | | | | | | | | | | | |
| USGA Women's Public Links | 300 | 200 | | 150 | | 110 | | 80 | | 50 | | 20 | | 25 | | 15 | | Quality 64 | | | | | | | | | | | | | | |
| USGA Junior Girls | 250 | 175 | | 125 | | 100 | | 75 | | 50 | | 20 | | 25 | | 10 | | Quality 64 | | | | | | | | | | | | | | |
| Womens Trans-National | 300 | 200 | | 150 | | 110 | | 80 | | 50 | | 20 | | 25 | | | | Quality 64 | | | | | | | | | | | | | | |
| Western Junior Girls | 250 | 175 | | 125 | | 100 | | 75 | | 50 | | 40 | | 20 | | | | Quality 32 | | | | | | | | | | | | | | |
| WWSGA State Amateur | 250 | 175 | | 125 | | 100 | | 75 | | 50 | | 40 | | 20 | | | | Quality 32 | | | | | | | | | | | | | | |
| WWSGA State Junior | 200 | 150 | | 110 | | 80 | | 50 | | 20 | | 10 | | 5 | | | | Quality 8 | | | | | | | | | | | | | | |
| WWSGA Junior Consolation | 20 | 15 | | 10 | | 5 | | | | | | | | | | | | Quality 8 | | | | | | | | | | | | | | |
| AJGA Match Play Events | 100 | 75 | | 50 | | | | | | | | | | | | | | | | | | | | | | | | | | | | |



Division II Runner-up Brent Wileman of Edgerton blasts out of a trap.



Division I Medalist Eric Goldapske of Sun Prairie watches his putt.



Division II Team
Champions,
Brown Deer High
School.

The Springs - 1991

Team Results

| | |
|-------------------------------------|-----|
| 1. Sun Prairie | 315 |
| 2. Edgewood | 316 |
| 3. Fond du Lac | 322 |
| 4. Madison Memorial Madison West | 323 |
| 6. Watertown | 330 |
| 7. Janesville Craig | 335 |
| 8. Eau Claire Memorial | 338 |
| 9. Janesville Parker | 340 |
| 10. Waukesha South | 343 |
| 11. Waukesha North | 347 |
| 12. Brookfield Central | 352 |
| 13. Beloit Memorial | 359 |
| 14. LaFollette | 383 |
| 15. Nathan Hale | 393 |

Individual Results

| | |
|--------------------------------|----|
| 1. E. Goldapske, Sun Prairie | 71 |
| M. Scheibach, Fond du Lac | |
| 3. C. Caulum, Edgewood | 72 |
| 4. D. Distefano, Craig | 75 |
| 5. J. Kuckkan, Watertown | 76 |
| 6. M. Heidenreich, Fond du Lac | 77 |
| B. Bohlman, Parker | |
| D. Grote, Mad Memorial | |
| 9. J. Klaus, Madison West | 78 |
| 10. S. Sosnowski, Edgewood | 80 |
| J. Wilkins, Mad Memorial | |
| N. Grover, Sun Prairie | |
| J. Ehlinger, Watertown | |
| C. Wasielewski, Wauk North | |

Division III Champions Elkhart Lake

1991 Preble Invitational

Team Results

| | |
|---|-----|
| 1. Green Bay Notre Dame | 312 |
| 2. Fond du Lac | 314 |
| 3. Madison Edgewood | 315 |
| 4. Sheboygan North Green Bay Southwest | 326 |
| 6. Oconto Falls | 330 |
| 7. Plymouth | 336 |
| 8. Marinette | 348 |
| 9. Green Bay Preble | 350 |
| 10. Merrill | 355 |
| 11. Sheboygan South | 358 |
| 12. Green Bay East | 377 |

Individual Results

| | |
|---------------------------------|----|
| 1. Chris Caulum, Edgewood | 73 |
| 2. Brian Pytleski, Oconto Falls | 73 |
| 3. Justin Hill, GB Southwest | 74 |
| 4. Paul Sawicki, GB Notre Dame | 75 |
| 5. Jon Schauder, Notre Dame | 76 |
| Pat Sweeney, Edgewood | 76 |
| 7. Mark Scheibach, Fond du Lac | 77 |
| Mike Burecki, Plymouth | |
| 9. Steve Sosnowski, Edgewood | 79 |
| Jeff Kleinke, Fond du Lac | |

Bestball Results

| | |
|-----------------------------------|----|
| 1. Sawicki-Schauder, Notre Dame | 70 |
| 2. Pytleski-Krause, Oconto Falls | 70 |
| 3. Caulum-Sosnowski, Edgewood | 72 |
| Scheibach-Heidenrich, Fond du Lac | |
| Kleinke-Baccus, Fond du Lac | |
| 6. Hill-Gustafson, GB Southwest | 73 |
| Burecki-Walcott, Plymouth | |
| Hayes-Sweeney, Edgewood | |
| 9. Nuss-Larsen, GB Southwest | 74 |
| VerHaagh-Holewinski, Notre Dame | |

**Whitefish Bay 2X4
Scramble**

| | |
|---------------------------------------|-----|
| 1. Watertown | 288 |
| 2. Whitefish Bay | 294 |
| 3. Grafton | 297 |
| 4. Waukesha South | 300 |
| 5. Homestead | 302 |
| 6. Oconomowoc | 305 |
| 7. Shorewood | 312 |
| 8. Wauwatosa East Port Washington | 315 |
| 10. South Milwaukee Wauwatosa West | 319 |
| 12. West Bend West | 322 |
| 13. West Bend East | 325 |
| 14. Nicolet | 326 |
| 15. West Allis Central | 335 |

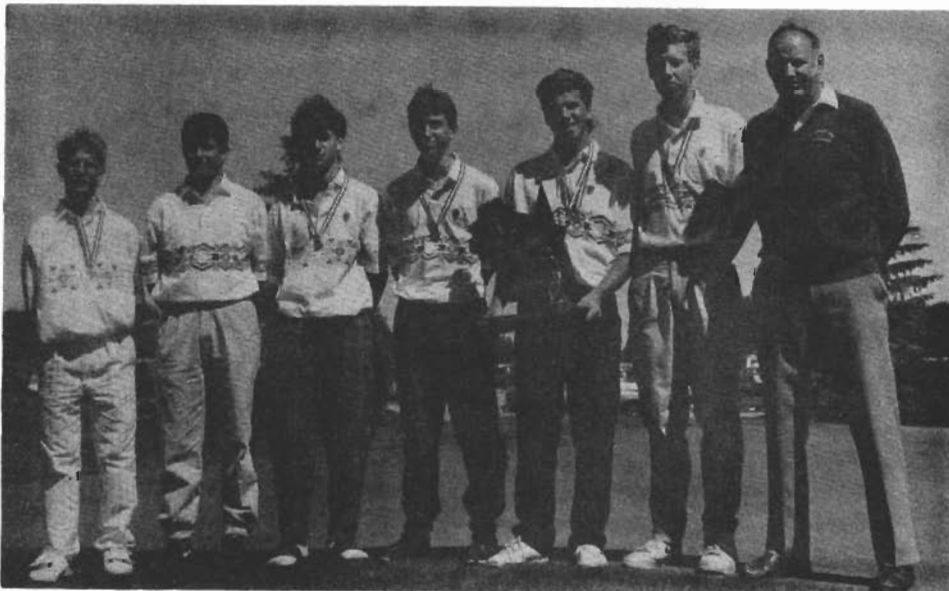
Waukesha South Bestball

Team Results

| | |
|---|-----|
| 1. Watertown | 150 |
| 2. Madison Edgewood | 155 |
| 3. Racine Case Wauwatosa East | 157 |
| 5. Waukesha North Waukesha South | 158 |
| 7. Nicolet Wisconsin Lutheran Whitefish Bay | 162 |
| 10. Shorewood | 163 |
| 11. Green Bay Preble Racine Park | 164 |
| 13. Cudahy Wauwatosa West | 167 |
| 15. Oconomowoc Racine Horlick | 168 |
| 17. South Milwaukee | 179 |

Individual Results

| | |
|------------------------------|----|
| 1. Mark Wilson, Wi Lutheran | 78 |
| 2. Ryan Clark, Tosa East | 81 |
| Brennan Sanders, Wauk North | |
| 4. Tim Wilkes, Watertown | 82 |
| Bill Delzer, Wauk South | |
| 6. John Ehlinger, Watertown | 83 |
| Andy Hardacre, WF Bay | |
| Chris Caulum, Edgewood | |
| Steve Sosnowski, Edgewood | |
| 10. Jason Kuckkan, Watertown | 84 |
| Dylan Hills, Watertown | |
| Scott Cimbalnik, Tosa East | |



MINUTES

Annual Membership Meeting
June 10, 1991
Lake Arrowhead

I. The meeting was **called to order** by President Lee Kaczmarek.

II. Lee **introduced board members**: Kris and Dick McKichan, Dan Chubrillo, Singh Grewal, Don Mark, Steve Hird, Al Forsythe, Jim Noltner, Tom Conrad, Joe Harlow, Ernie Nieman, and Mary Beth Nienhaus.

III. **Minutes of the last annual meeting** were read by First Vice-President, Mary Beth Nienhaus. A motion was made by Al Forsythe and seconded by Jim Noltner to accept the minutes.

IV. A **plaque was presented** by Mary Beth Nienhaus on behalf of the coaches association to Lee Kaczmarek for his outstanding leadership during his two year presidency.

V. Lee **recognized the coaches in attendance who had individuals and teams in the boys 1991 WIAA state meet**.

VI. Lee announced the All State boys first, second, third and honorable mention teams. He noted only one State tournament medalist was nominated to the **All State Team**. Coaches have received nomination forms during the course of the year. Discussion followed concerning the coaches sending in nomination forms. Don Marx suggested that the sectional tournament director could have nomination forms available. Lee will write an article in the Coach Approach concerning the situation.

A written request was given to the Board to add a spot for each coach to nominate a candidate for All-State team on each regional or sectional entry blanks.

VII. Lee inquired if any members would like to **join the Board of Directors**. Sign up sheets were available. Doris Killian of Cochrane-Fountain City High School did express some interest.

VIII **GMO Tickets** (200) are available from Tom Strong. We can sell them for \$15 each. Generally, the tickets sell for \$20. Lee asked if anyone was interested in selling tickets.

IX. Lee introduced **Russ Nelson** who is affiliated with the Fellowship of Christian Athletes. Russ commented about the organization and the Jr. Golf Clinic that will be held at Lawsonia in June.

X. Lee then announced the action the **WIAA Board of Control** took at their January meeting concerning our recommendations.

A. You recommended the WIAA waive the riding cart rule only in cases where there is a long-term illness/disability. This was approved by the Board of Control.

B. You recommended that coaching on the course be allowed only during the time after holing out on a green to teeing off on the next hole. This was accepted by the Board of Control.

C. You recommended that school-appointed coaches must be on the course to supervise play and if the coach leaves the course, their team is disqualified. This was denied by the Board of Control. While everyone encourages coaches to be on the course, it was felt that disqualification was too severe of a step.

D. You recommended that the handicapped hole procedure be used to break individual ties for second place in WIAA tournament competition. This was accepted by the Board of Control.

XI. **Coaches Hall of Fame**.

A. Lee introduced Leo Kerschitz of Union Grove HS who is in the hall of fame.

B. Lee announced our new nominees.

1. Hugh Steward- Horlick
2. John Ashenfelter- Craig
3. Ted Callis- Madison East
4. Greg Shimanski- Edgewood
5. Ken Cheek- Northland Pines

C. Lee commented about the selection process used to evaluate potential Hall of Fame candidates.

XII. **Questionnaire** in the next newsletter concerning

A. coaches feelings about coaching on course this year and the new procedure next year. This information will be sent to Frank McCormick.

B. coaches giving advice for rules

decision (team player, opponent)

C. coaches taking gas carts around the course to advise golfers

D. parents (spectators) talking to golfers (clarification needed)

E. where parents should walk on the course

XIII **Golf Foundation**

A. We would like to house our plaques of our Hall of Fame members at UW Madison.

B. Point system for the junior golf was reevaluated.

C. Lee emphasized that the Golf Foundation's major focus is junior golf.

XIV. **Possible State Tournament Sites** (WIAA)

A. Lee suggested using two courses and rotating each course between A, B, C Classes. An example, first year A will play UW Madison and B and C will play Lake Arrowhead. The next year the format would be reversed.

B. Discussion followed concerning the poor playing conditions at Fox Hills.

C. Lee will recommend to the WIAA to shorten the time between the Regional and Sectional tournament.

D. Ernie Nieman suggested to eliminate the Regional Tournaments. He also recommended that some teams that were not the top two teams from each sectional could still qualify for state based on their score and the difficulty (slope) of the course.

E. Bob Johnson noted that a course in Fond du Lac would like to host in 1994.

XV. **Lee's closing remarks**

A. Golf coaches belong on the course, not always playing.

B. We are here to help kids!

XVI. **Coaches Association Tournament** - Tom Conrad

A. Tom had a handout for each coach with starting times, clinic, and awards.

B. Lake Arrowhead has reduced the green fees for the tournament so more money will be available for prizes.

Minutes were submitted by: Mary Beth Nienhaus.

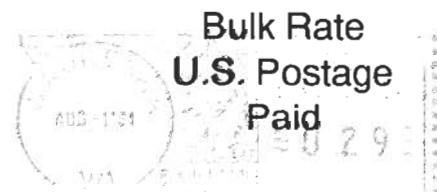
Wisconsin High School Golf Coaches Association Questionnaire

1. Did you like the WIAA new rule change allowing coaches to coach on the golf course? YES ___ NO ___
2. Should coaches be able to give advice for a rules decision to a player from his/her team? YES ___ NO ___
3. Should coaches be able to give advice for a rules decision to a player on another team? YES ___ NO ___
4. What did you find positive or negative about the rule change?

MAIL TO:

WHSGCA
1819 Sycamore Drive
Waukesha, WI 53186

Wisconsin High School Golf Coaches Association
c/o Lee Kaczmarek
Waukesha South High School
401 E. Roberta Avenue
Waukesha, WI 53186



PAUL NAUMANN MEMBER-91
W148 N8251 ALBERT PL
MENOMONEE FALLS WI 53051

(Please forward to Golf Coach if not at school address)